

MACHINE SPECIFICATIONS

Spindle diameter .....	mm	150
Spindle inside taper .....		ISO.50
Spindle external centring .....		ISO.50
Sleeve external centring .....		ISO.60
Ram dimensions .....	mm	350 x 350
Spindle horizontal travel .....	mm	800
Ram horizontal travel .....	mm	800
Headstock vertical travel .....		4000
Column cross travel .....		10000

SPEEDS

Infinitely variable speeds of the spindle..... rpm. 4 - 1.600

FEEDS

Infinitely variable feeds for all the axis.....	mm/min.	3 - 2.500
Rapid motion for the axis X,Y,W,Z .....	mm/min.	5000
DC. motor for spindle drive .....	kW.	40
Nominal torque of the DC. motors for feeds of axis Z - W .....	Nm.	38
Nominal torque of the DC. motors for feeds of axis Y .....	Nm.	65
Nominal torque of the DC. motors for feeds of axis X .....	Nm.	115

DESCRIPTION AND CHARACTERISTICS OF THE MOTORS  
FOR SPEEDS (D.C.)

Power: 40 kW.

R.P.M.: from 920 to 2300 at constant power  
from 72 to 920 at constant torque

FOR FEEDS (D.C.)

"X" Axis (Cross of the column)

Nominal torque: 115 Nm.

R.P.M.: 0 - 1.000

"Y" Axis - Headstock's vertical

Nominal torque: 65 Nm. R.P.M. 0 - 1000

"Z" Axis - Main Spindle

"W" Axis - Ram

Nominal torque: 38 Nm.

R.P.M.: 0 - 1.200

CLAMPING HYDRAULIC GROUP (A.C.)

Power: 0,55 kW.      Tension 380 V.      Frequency 50 Hz.

MAIN MOTOR VENTILATION

Power: 1,1 kW.      Tension 380 V.      Frequency 50 Hz.

VERTICAL DRIVE OF THE PENDANT

Power: 0,13 kW.      Tension 380 V.      Frequency 50 Hz.

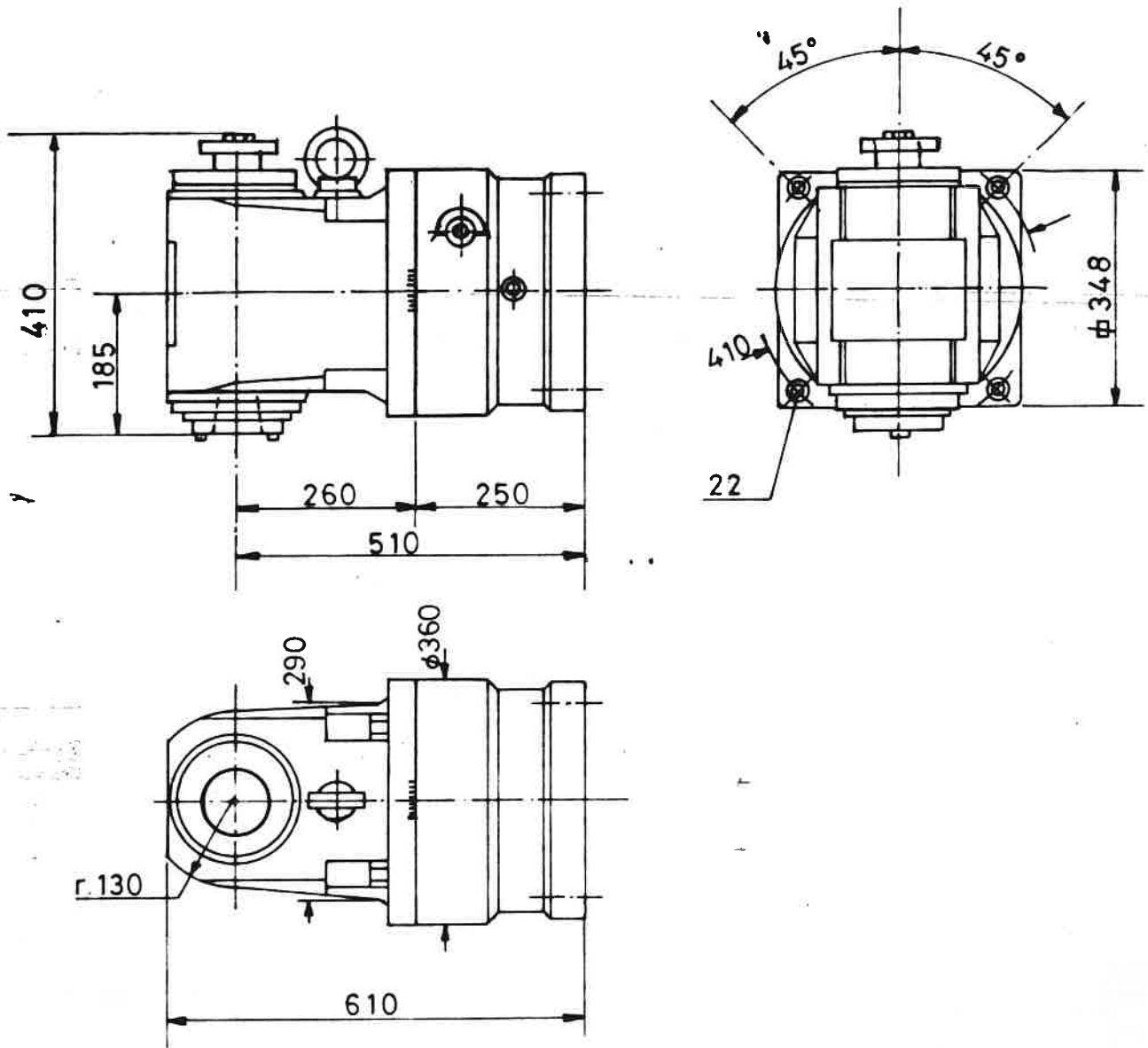
2 BLOWERS - MOTORS FOR ELECTRICAL CABINET

Power: 0,22 kW.      Tension 380 V.      Frequency 50 Hz.

PENDANT BLOWER

Power: 0,018 kW.      Tension 220 V.      Frequency 50 Hz.

VERTICAL MILLING HEAD



CHARACTERISTICS

Speeds of the cutter - holder spindle, infinitely variable .....	r.p.m.	4 - 1.600
Head rotation .....		360°
Main spindle inside taper .....		ISO - 50
Cutter centring of the cutter - holder spindle .....		ISO - 50

MAIN CHARACTERISTICS

Table longitudinal travel .....	1.500 mm.
Dimensions of the table .....	2.500 x 2.500 mm.
Total height .....	1.150 mm.
Width of "T" slots .....	28 mm.
Number of slots .....	11
Distance between "T" slots .....	220 mm.
Rotation feeds infinitely variable.....	1 - 230 dgr/min.
Rapid motion for table rotation.....	1,4 r.p.m.
Feeds infinitely variable for longitudinal travel .....	3 - 2.500 mm/min.
Rapid motion for longitudinal traverse.....	5.000 mm/min.
DC. motors nominal torque .....	65 Nm.
Table max. load capacity .....	30.000 Kgs.
Approx. net weight .....	19.000 Kgs.

TABLE MAX. LOAD CAPACITY

